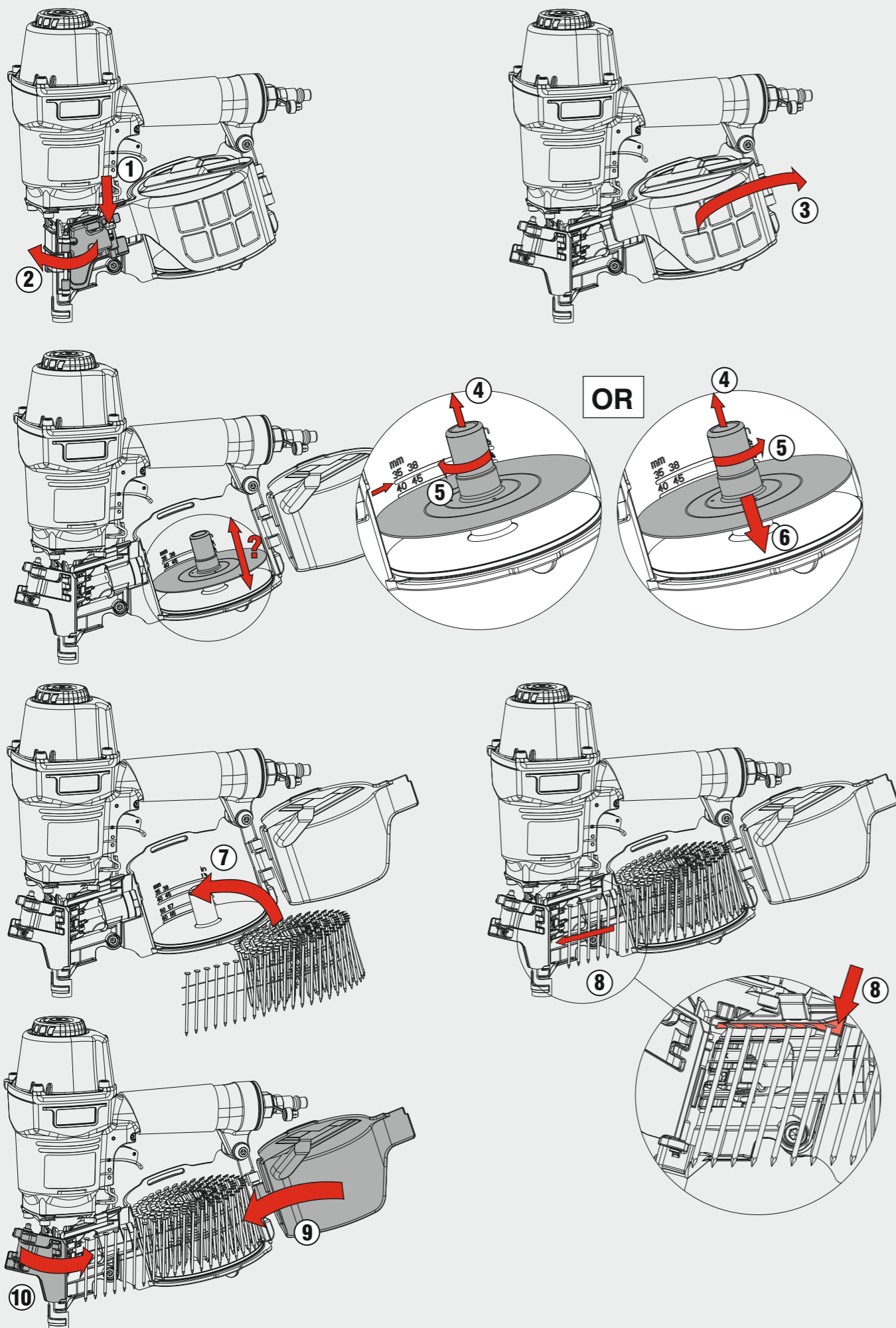


## Caricamento - Loading



# MORE®

**Manuale d'uso, manutenzione e parti di ricambio**  
**Use, maintenance and spare parts manual**  
**Gebrauchsanweisung, Instandhaltungsrichtlinien und Ersatzteile**  
**Manuel d'utilisation, entretien et pièces de rechange**  
**Manual de uso, mantenimiento y repuestos**  
 Εγχειρίδιο χρήσης, συντήρησης και ανταλλακτικών  
**Manual de utilização, manutenção e partes sobresselentes**  
**Handleiding voor gebruik, onderhoud en wisselstukken**  
**Brugsanvisning, vedligeholdelse og reservedelsliste**

**Parte 2**  
**Part 2**  
**Teil 2**  
**Partie 2**  
**Part 2**  
 2° Μέρος  
**Parte 2**  
**Deel 2**  
**Del 2**



# V80

cod. 195MV80



195MV80\_V80\_310120\_IV



**Warning:** Please read the instructions and warnings for this tool carefully before use. Failure to do so could lead to serious injury.

<b>Dati tecnici</b> Technical data Technische daten	<b>Données techniques</b> Datos técnicos Τεχνικά χαρακτηριστικά	<b>Dados técnicos</b> Technische gegevens Teknische data
---	---	--

<b>Misure impiegabili mm</b> Usable lengths mm Gebrauchliche Längen mm	Mesures utilisables mm Medidas que se pueden emplear mm Διαστάσεις σε μμ	Medidas que se podem utilizar mm Te gebruiken engtes in mm Brugbare længder i mm	<b>50 ÷ 83</b>
--	--	--	----------------

<b>Capacità caricatore n° punti</b> Magazine capacity No. of fasteners Magazinkapazität Nägel	Capacité chargeur n° de points Capacidad cargador n° puntos Δυνατότητα γεμιστέρα, σπινδότερος	Capacidade carregador n° pontos Capaciteit magazijn in aantal spijkers Kapacitet af magasin antal klemme	<b>225 ÷ 250</b>
---	---	--	------------------

<b>Pressione d'esercizio</b> Working pressure Betriebsdruck	Pression de fonctionnement Presión de trabajo Πίεση λειτουργίας ατμ.	Pressao de trabalho Werkdruk Arbejds tryk bar	<b>5 ÷ 8 bar</b> <b>70 ÷ 115 psi</b>
---	--	---	---

<b>Consumo aria litri/colpo</b> Air consumption litres/shot Luftverbrauch Liter/Schlag	Consommation air litre/coup Consumo aire-litros/golpe Καταναλοση αερα λ/ξτπημα	Consumo ar litro/golpe Luchtverbruik liter/schot Luftforbrug liter/skud	<b>2,28</b>
--	--	---	-------------

<b>Peso kg</b> Weight kg Gewicht kg	Poids kg Peso kg Βαρος κγ	Peso kg Gewicht in kg Vaegt kg	<b>3,98</b>
---	---------------------------------	--------------------------------------	-------------

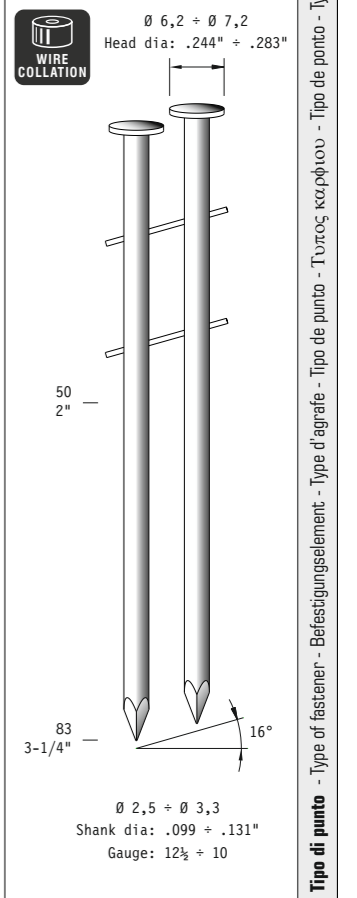
<b>Dimensioni (AxBxH) mm</b> Dimensions mm Größe mm	Dimension mm Dimensiones mm Δυνατότητα γεμιστέρα, σπινδότερος	Dimencoes mm Afmetingen in mm Dimensioner mm	<b>362x132x307</b>
---	---	--	--------------------

<b>EN 12549 :1999 ISO 11201 :1995</b> <b>Pressione sonora in pos. operatore</b> Sound pressure at the workstation Lärmintensität am Arbeitsplatz	Pression acoustique près de l'opérateur Presión sonora en posición encargado Ακουστική πίεση στη θέση χειριστού	Intensidade sonora perto do operador Geluidssterkte op de werkplek Lydstyrke på operatorposten	$L_{pA, 1s}$ (Rif. 20μPa) <b>90,8 dB(A)</b>
---	---	--	---

<b>EN 12549 :1999 ISO 3744 :1994</b> <b>Potenza sonora emessa</b> Emitted sound power Ausgestrahlte Lärmintensität	Puissance acoustique émise Potencia sonora emitida Ακουστική ισχυ	Potência sonora emitida Uitgestraalde geluidssterkte Udsendt lydstyrke	$L_{WA, 1s}$ (Rif. 1pW) <b>103,8 dB(A)</b>
---	---	--	--

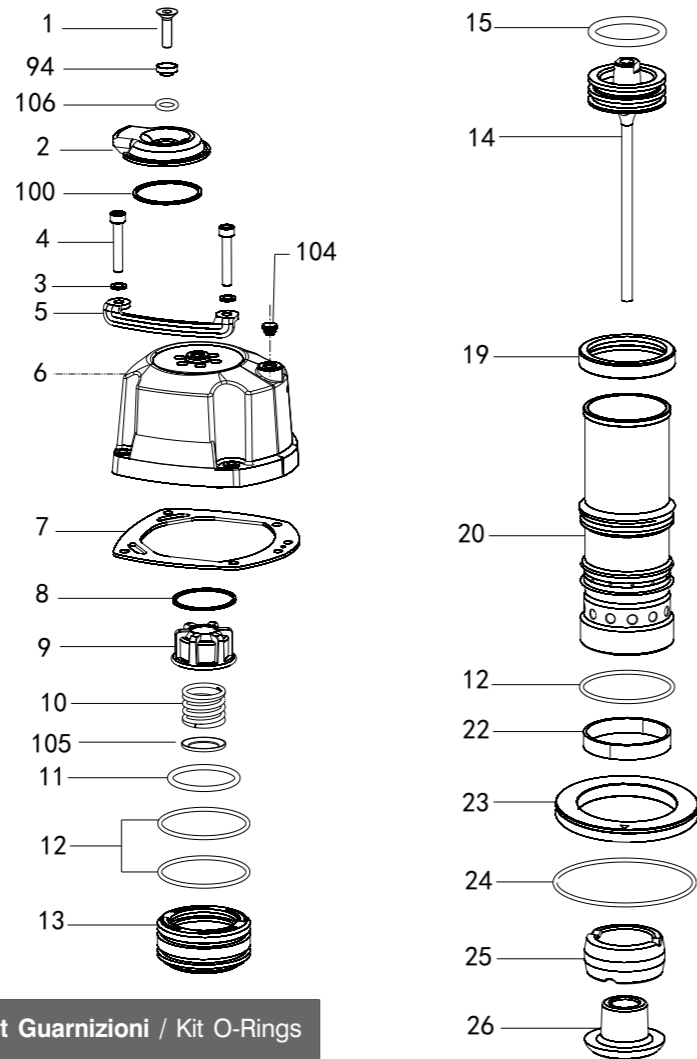
<b>EN 28662 :1992 ISO 5349 :1986 ISO 8662 -11</b> <b>Valore medio ponderato di vibrazione sull'impugnatura max.33 colpi</b> Weighted mean value of vibration on the grip max.33 shots Mitteler Vibrationswert, am Griff gemessen max.33 Schäge	Valeur moyenne pondérée de vibration mesurée sur la poignée max.33 coups Valor medio ponderado de vibracion medida en la empunadura max.33 golp Μεσος ορος μετρησης κραδασμου στη χειρολαβη μαξ.33 ξτπημα	Valor medio ponderado de vibracao medida no punho max.33 golpes Gewogen gemiddelde vibratiewaarde max.33 schot Middelvaerdi af vibrationer på handtaget max.33 skud	<b>5,1 m/s<sup>2</sup></b>
---	---	---	----------------------------

**CNW25**  
**CNW28**  
**CNW31**

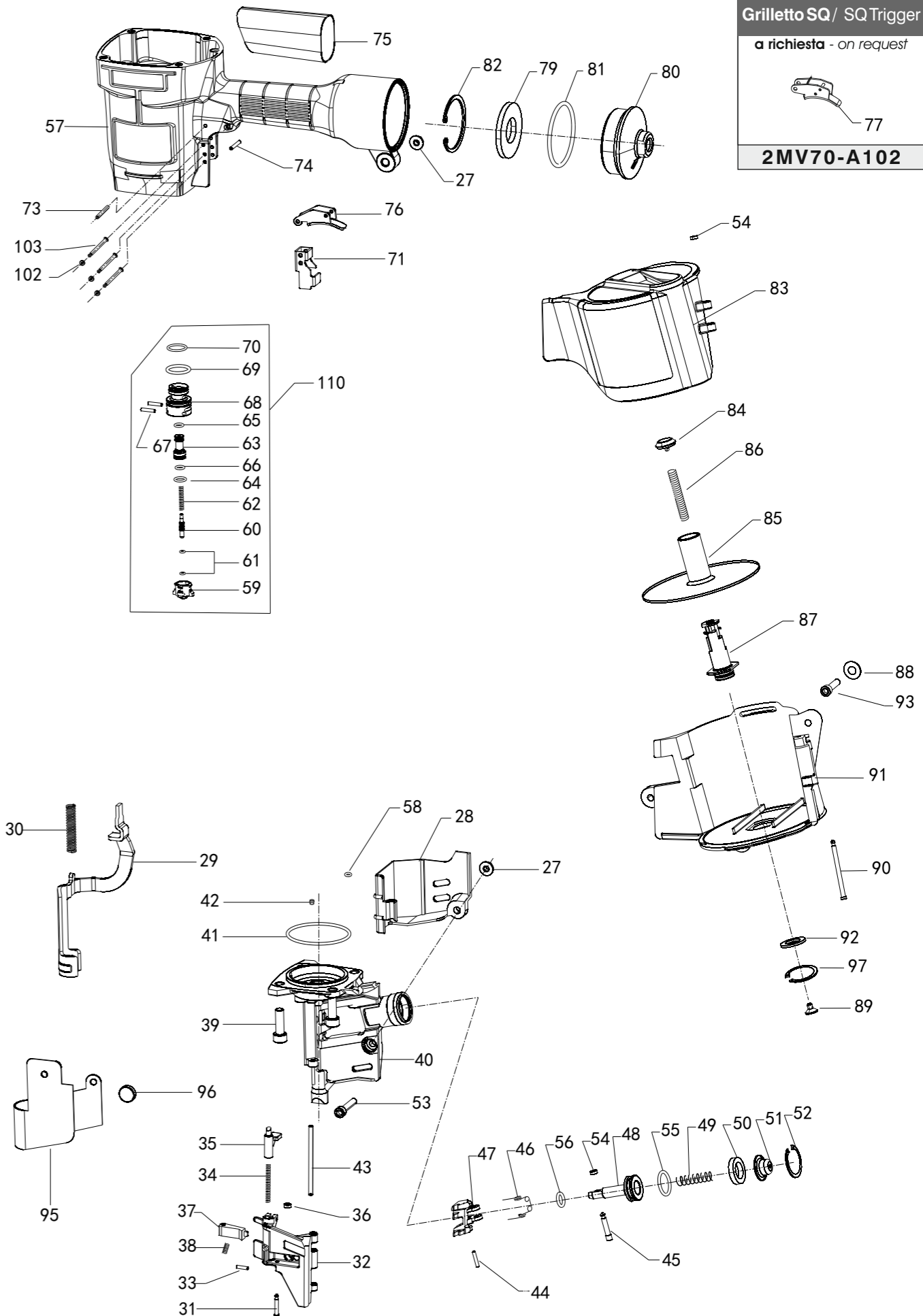


Ref. No. Part No. Description

001	2MCN3383-A101	Counter Sunk Screw
002	2MV80-A002	Deflector
003	2MV57-A003	Washer
004	2MV80-A004	Hex. Soc. Hd. Bolt
005	2MV80-A005	Protection
006	2MV80-A006	Cap
007	2MV80-A007	Gasket
008	2MV57-A007	Ring
009	2MV80-A009	Bumper
010	2MV57-A009	Compression Spring
011	2MV57-A011	O-Ring
012	2MV80-A012	O-Ring
013	2MV80-A013	Head Valve Piston
014	2MV80-A014	Driver Unit
015	2MV80-A015	O-Ring
019	2MCN2970-A115	Collar
020	2MV80-A020	Cylinder
022	2MV80-A022	Cylinder Band
023	2MV80-A023	Cylinder Ring
024	2MV80-A024	O-Ring
025	2MCN2970-A121	Bumper-A
026	2MCN2970-A122	Bumper-B
027	2MCN2970-A442	Bolt Cap
028	2MV57-A025	Spring Cover
029	2MV80-A029	Safety
030	2MV80-A030	Safety Spring
031	2MV80-A031	Pin
032	2MV80-A032	Door
033	2MCN3165-A211	Spring Pin
034	2MV80-A034	Latch Spring
035	2MCN2970-A413	Door Latch
036	2MV80-A036	Pin-Nail Stop
037	2MCN2970-A419	Nail Stop
038	2MV80-A038	Spring
039	2MV80-A039	Hex. Soc. Hd. Bolt
040	2MV80-A040	Nose Piece
041	2MV80-A041	O-Ring
042	2MCN2970-A123	Grommet A
043	2MCN2970-A124	Door Shaft Pin
044	2MCN3165-A216	Spring Pin
045	2MCN2970-A435	Pin Feed Piston
046	2MCN2970-A437	Feed Finger Spring
047	2MV80-A047	Feed Finger
048	2MV80-A048	Feed Piston
049	2MCN2970-A409	Feed Finger Spring
050	2MV80-A050	Feed Bumper
051	2MV80-A051	Feed Piston Cap
052	2MCN2970-A411	C-Ring
054	2MCN2970-A416	Pu Retainer
055	2MV80-A055	O-Ring
056	2MV80-A056	O-Ring
057	2MV80-A057	Body
058	2MCN2970-A402	O-Ring
059	2MV57-A084	Trigger Valve Head
060	2MV57-A065	Plunger
061	2MV57-A066	O-Ring
062	2MV57-A064	Spring
063	2MV57-A061	Valve Plunger
064	2MV57-A063	O-Ring
065	2MV57-A060	O-Ring
066	2MV57-A062	O-Ring
067	2MCN2970-A211	Pin
068	2MV57-A070	Plunger Cap
069	2MV57-A067	O-Ring
070	2MV57-A069	O-Ring
071	2MCN2970-A425	Safety Guide
073	2MV80-A073	Roll Pin
074	2MV80-A074	Roll Pin
075	2MV80-A075	Handle Grip
076	2MV70-A101	Trigger Assy
077	2MV70-A102	Sequential Trigger Assy
079	2MV80-A079	Filter
080	2MV80-A080	End Cap
081	2MV80-A081	O-Ring
082	2MV80-A082	C-Ring
083	2MV80-A083	Magazine Cover
084	2MV80-A084	Spring Base
085	2MV80-A085	Spacer
086	2MV57-A073	Spring
087	2MV80-A087	Magazine Post
088	2MV57-A089	Washer
089	2MV57-A072	Spring Base

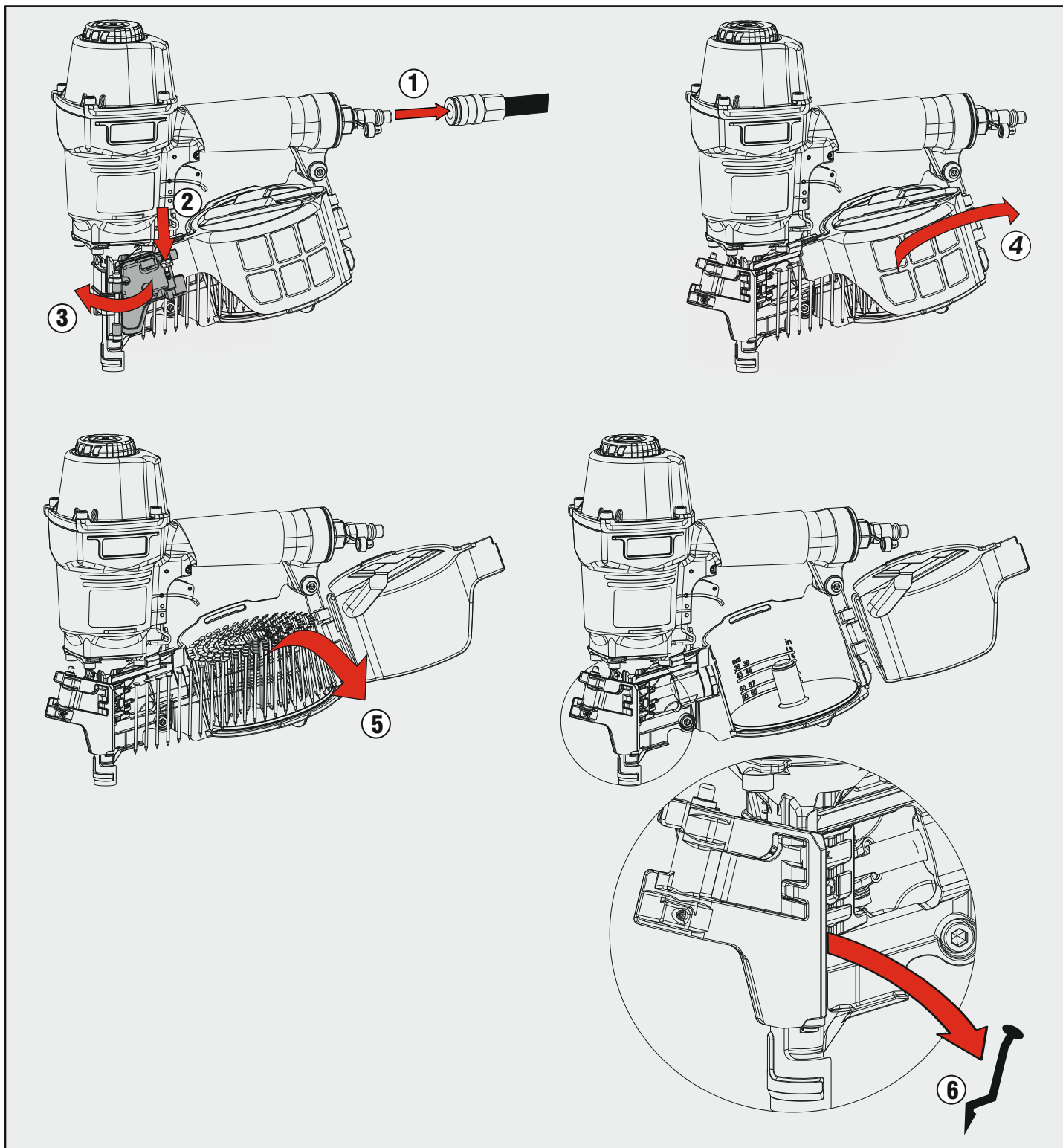


090	2MCN2970-A443	Magazine Shaft Pin
091	2MV80-A091	Magazine Case
092	2MV80-A092	Washer
093	2MV80-A093	Hex. Soc. Hd. Bolt
094	2MCN2970-A123	Grommet A
095	2MV80-A095	Dusty Cover
096	2MV80-A096	Dust Shield Plug
097	2MV57-A080	Washer
100	2MV80-A100	Washer
102	2MV57-A087	Pu Retainer
103	2MV80-A103	Pin
104	2MCN2970-A103	Grommet
105	2MCN2970-A110	Washer
106	2MV80-A106	O-Ring
110	2MV57-A100	Trigger Valve Assy
K100	2MV80-K100	Kit O-Ring



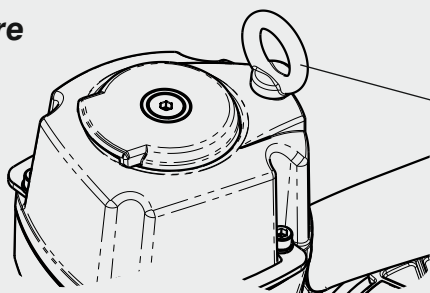
Grilletto SQ / SQ Trigger  
 a richiesta - on request  
 2MV70-A102

## Disinzeppamento - Jam clearing



## Accessori a richiesta - Upon request accessories

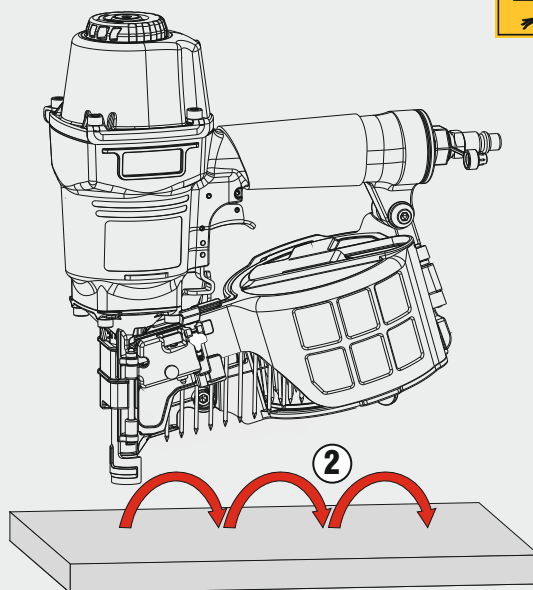
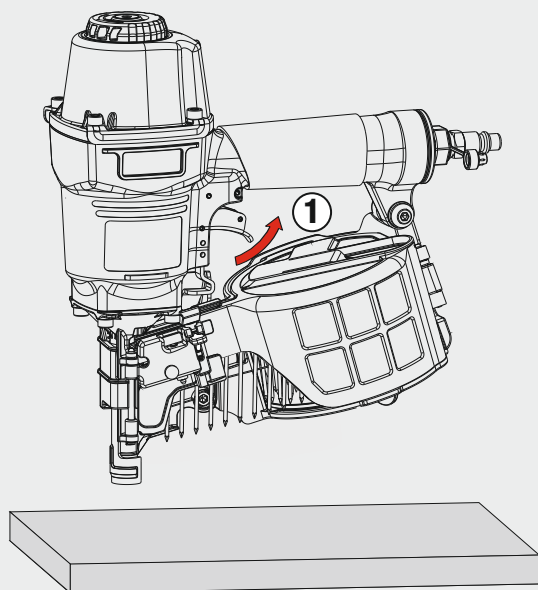
**Supporto bilanciere**  
Tool hanger



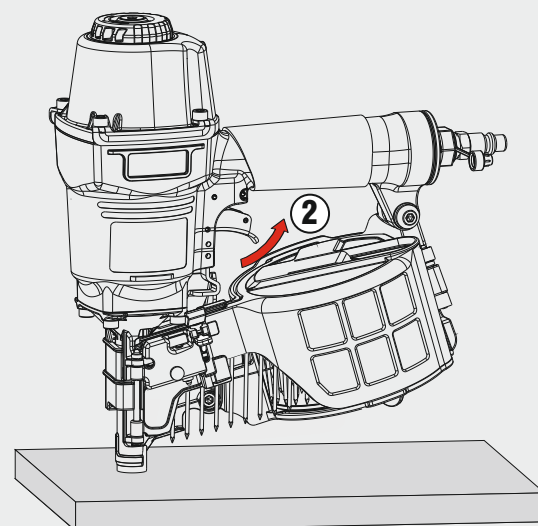
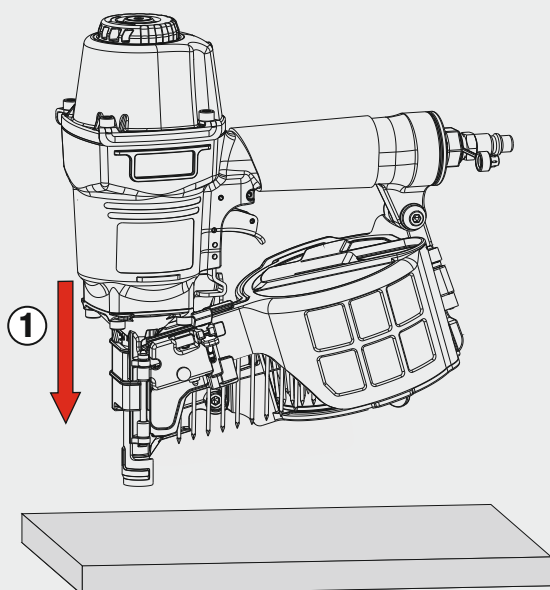
08.15.7

## Azionamento - Actuation

### Azionamento a contatto Contact actuation



Oppure - Or



## Dotazioni - Equipment

