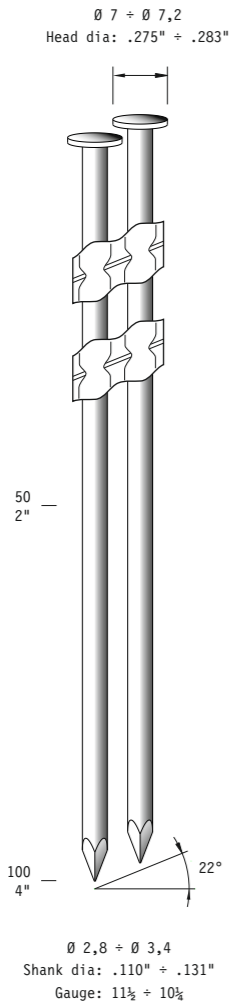


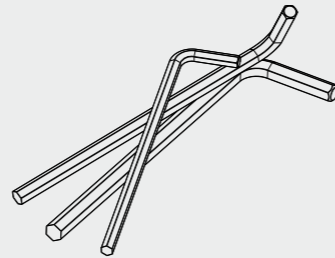
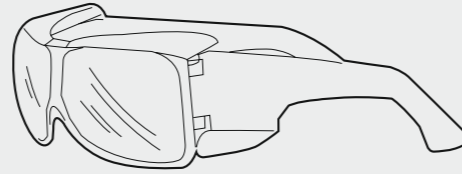
SNPA-28

SNPA-31

SNPA-34



## Dotazioni - Equipment



<b>Manuale d'uso, manutenzione e parti di ricambio</b>	<b>Parte 2</b>
<b>Use, maintenance and spare parts manual</b>	<b>Part 2</b>
<b>Gebrauchsanweisung, Instandhaltungsrichtlinien und Ersatzteile</b>	<b>Teil 2</b>
<b>Manuel d'utilisation, entretien et pièces de rechange</b>	<b>Partie 2</b>
<b>Manual de uso, mantenimiento y repuestos</b>	<b>Part 2</b>
<b>Εγχειρίδιο χρήσης, συντηρησης και ανταλλακτικών</b>	<b>2° Μέρος</b>
<b>Manual de utilização, manutenção e partes sobresselentes</b>	<b>Parte 2</b>
<b>Handleiding voor gebruik, onderhoud en wisselstukken</b>	<b>Deel 2</b>
<b>Brugsanvisning, vedligeholdelse og reservedelsliste</b>	<b>Del 2</b>



# SN22.100

cod. 195MSN22100



**Warning:** Please read the instructions and warnings for this tool carefully before use. Failure to do so could lead to serious injury.

Dati tecnici Technical data Technische daten	Données techniques Datos técnicos Τεχνικά χαρακτηριστικά	Dados técnicos Technische gegevens Teknische data	
<b>Misure impieghiabili mm</b> Usable lengths mm Gebrauchliche Längen mm	Mesures utilisables mm Medidas que se pueden emplear mm Διαστάσεις σε μμ	Medidas que se podem utilizar mm Te gebruiken lengtes in mm Brugbare længder i mm	<b>50 ÷ 100</b>
<b>Capacità caricatore n° punti</b> Magazine capacity No. of fasteners Magazinkapazität Nägel	Capacité chargeur n° de points Capacidad cargador n° puntos Δυνατότητα γεμιστέρα, σπινδύτερος	Capacidade carregador n° pontos Capaciteit magazijn in aantal spijkers Kapacitet af magasin antal klemme	<b>60</b>
<b>Pressione d'esercizio</b> Working pressure Betriebsdruck	Pression de fonctionnement Presión de trabajo Πίεση λειτουργίας ατμ.	Pressao de trabalho Werkdruk Arbejds tryk bar	<b>5 ÷ 8 bar 70 ÷ 115 psi</b>
<b>Consumo aria litri/colpo</b> Air consumption litres/shot Luftverbrauch Liter/Schlag	Consommation air litre/coup Consumo aire-litros/golpe Καταναλοση αερα λ/ξτπημα	Consumo ar litro/golpe Luchtverbruik liter/schot Luftforbrug liter/skud	<b>2,27</b>
<b>Peso kg</b> Weight kg Gewicht kg	Poids kg Peso kg Βαρος κγ	Peso kg Gewicht in kg Vægt kg	<b>3,60</b>
<b>Dimensioni (AxBxH) mm</b> Dimensions mm Größe mm	Dimension mm Dimensiones mm Δυνατότητα γεμιστέρα, σπινδύτερος	Dimencoes mm Afmetingen in mm Dimensioner mm	<b>529x139x369</b>

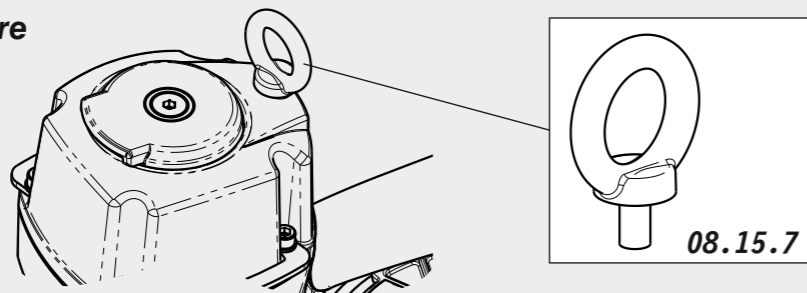
<b>EN 12549 :1999 ISO 11201 :1995</b>	<b>Pressione sonora in pos. operatore</b> Sound pressure at the workstation Lärmintensität am Arbeitsplatz	Pression acoustique près de l'opérateur Presión sonora en posición encargado Ακουστική πίεση στη θέση χειριστού	Intensidade sonora perto do operador Geluidssterkte op de werkplek Lydstyrke på operatorposten	$L_{pA, 1s}$ (Rif. 20μPa) <b>91,32 dB(A)</b>
---------------------------------------	--	---	--	--

<b>EN 12549 :1999 ISO 3744 :1994</b>	<b>Potenza sonora emessa</b> Emitted sound power Ausgestrahlte Lärmintensität	Puissance acoustique émise Potencia sonora emitida Ακουστική ισχυ	Potência sonora emitida Uitgestraalde geluidssterkte Udsendt lydstryrke	$L_{WA, 1s}$ (Rif. 1pW) <b>97,68 dB(A)</b>
--------------------------------------	---	---	---	--

<b>EN 28662 :1992 ISO 5349 :1986 ISO 8662 -11</b>	<b>Valore medio ponderato di vibrazione sull'impugnatura max.33 colpi</b> Weighted mean value of vibration on the grip max.33 shots Mitteler Vibrationswert, am Griff gemessen max.33 Schläge	Valeur moyenne pondérée de vibration mesurée sur la poignée max.33 coups Valor medio ponderado de vibracion medida en la empunadura max.33 golp Μεσος ορος μετρησης κραδασμιων στη χειρολαβη μαξ.33 ξτπημα	Valor medio ponderado de vibracao medida no punho max.33 golpes Gewogen gemiddelde vibratiewaarde max.33 schot Middelvaerdi af vibrationer på handtaget max.33 skud	<b>5,17 m/s²</b>
---	---	--	---	------------------

## Accessori a richiesta - Upon request accessories

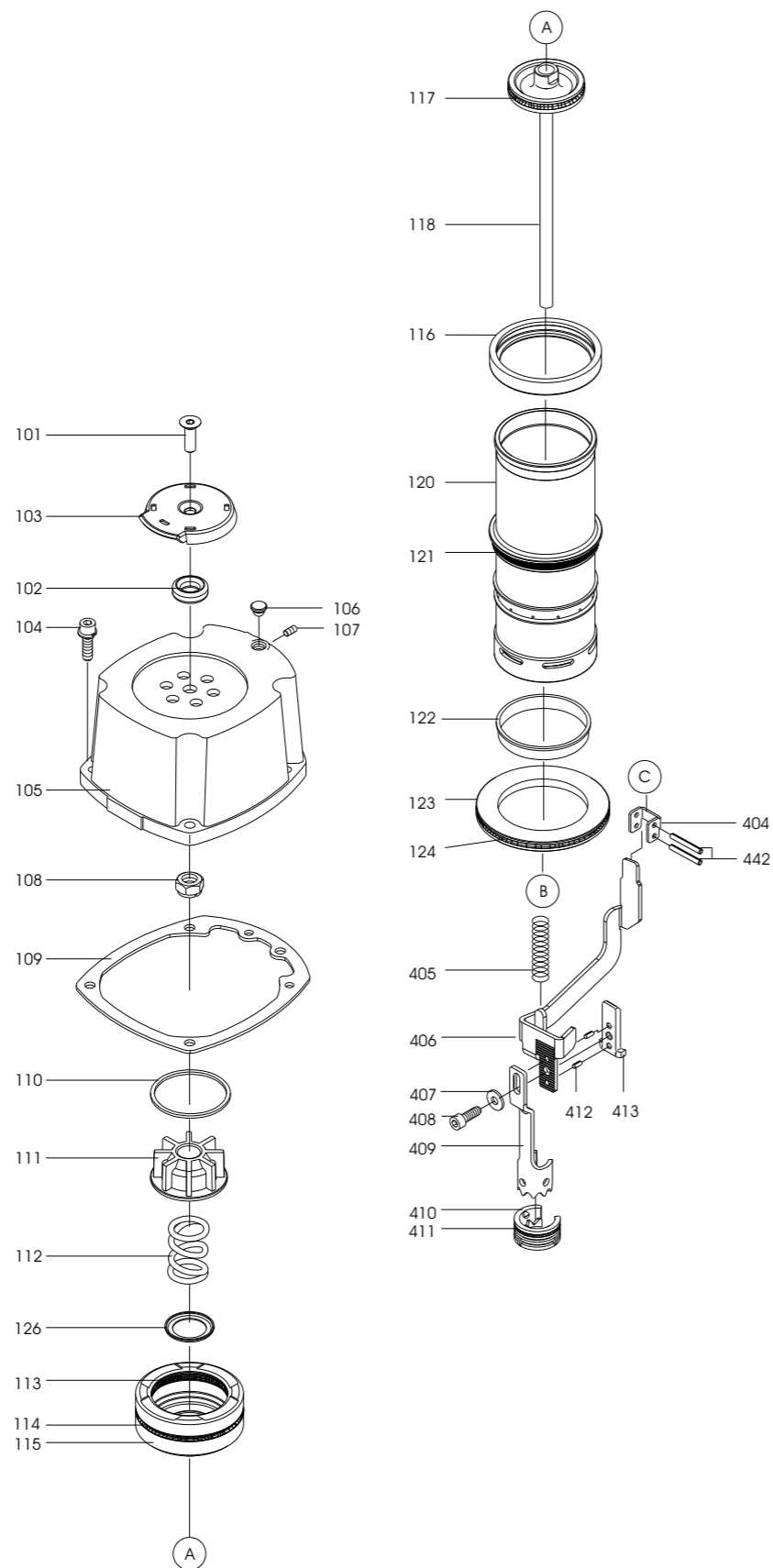
**Supporto bilanciante**  
Tool hanger



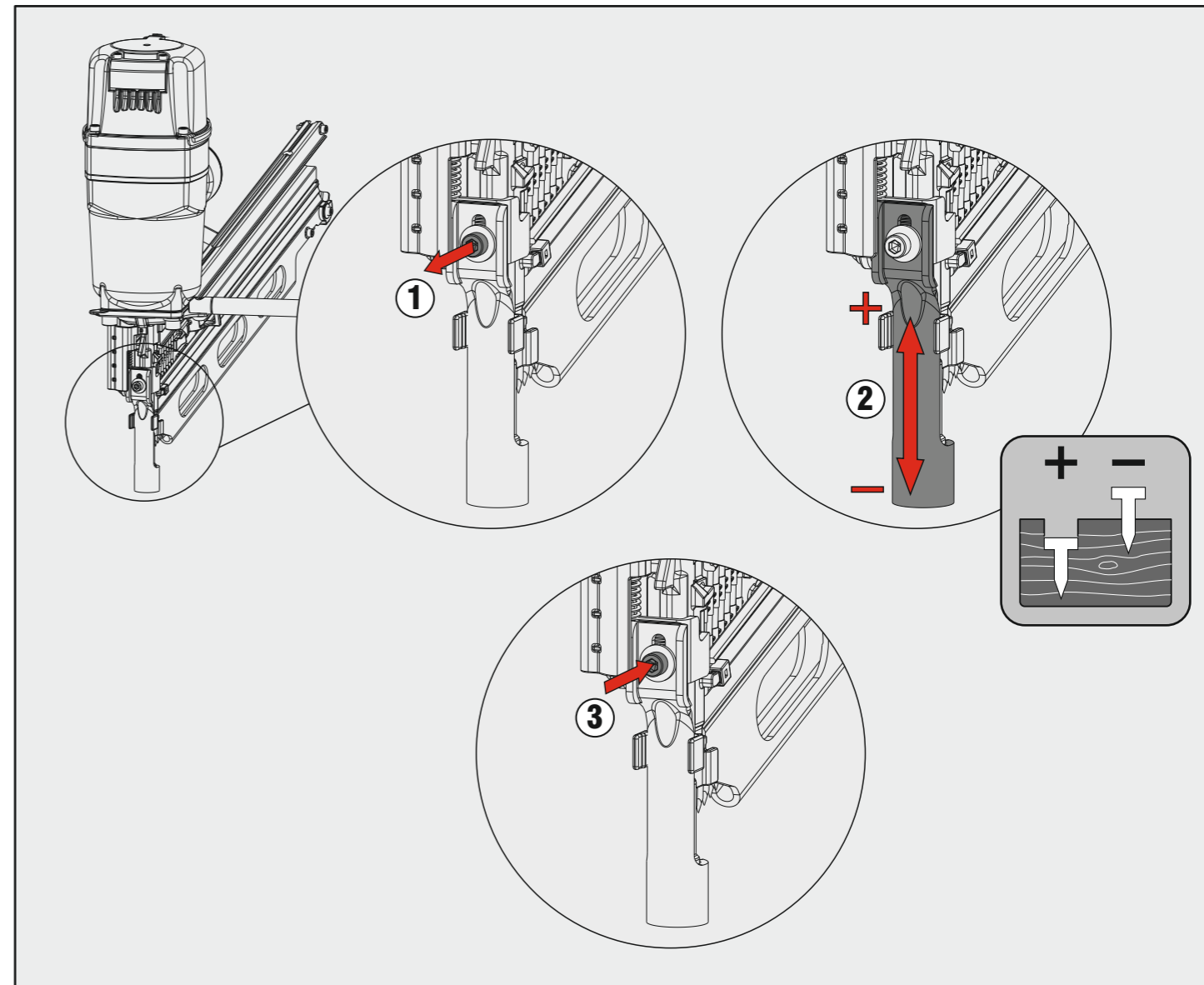
08.15.7

Ref. No. Part No. Description

101	2MSN2210-A101	Hex. Soc. Hd. Bolt
102	2MSN2210-A102	Flat Washer
103	2MSN2210-A103	Deflector
104	2MSN2210-A104	Bolt Assy
105	2MSN2210-A105	Cap
106	2MCN2970-A103	Grommet
107	2MCN2970-A104	Hex. Soc. Hd. Screw
108	2MSN2210-A108	Lock Nut
109	2MSN2210-A109	Cylinder Cap Seal
110	2MSN2210-A110	Gasket
111	2MSN2210-A111	Seal
112	2MCN2970-A108	Compression Spring
113	2MCN3165-A120	O-Ring
114	2MSN2210-A114	O-Ring
115	2MSN2210-A115	Hd. Valve Piston
116	2MSN2210-A116	Collar
117	2MSN2210-A117	O-Ring
118	2MSN2210-A118	Driver Unit
120	2MSN2210-A120	Cylinder
121	2MCN3390-A126	O-Ring
122	2MCN3390-A127	Cylinder Ring
123	2MSN2210-A123	Cylinder Spacer
124	2MCN3390-A129	O-Ring
125	2MCN3390-A130	Bumper
126	2MCN2970-A110	Washer
200	2MCN3165-A200	Trigger Valve Unit
201	2MCN3165-A201	O-Ring
202	2MCN3165-A202	O-Ring
203	2MCN3165-A203	Plunger Cap
204	2MSN3165-A204	Valve Plunger
205	2MCN3165-A205	O-Ring
206	2MCN3165-A206	O-Ring
207	2MCN3165-A207	Spring
208	2MCN2550-A208	Plunger
209	2MCN3165-A209	O-Ring
210	2MCN3165-A210	Trigger Valve Head
211	2MCN3165-A211	Spring Pin
212	2MCN3165-A213	Spring Pin
213	2MSN2210-A213	Secondary Trigger
214	2MSN2210-A214	Trigger
215	2MCN3165-A216	Spring Pin
216	2MSN2210-A216	Trigger Pivot Pin
217	2MCN3165-A416	Urethane Retainer
301	2MSN2210-A301	Gun Body Unit
302	2MCN3390-A302	O-Ring
303	2MCN2210-A303	End Cap
304	2MCN3165-A305	Air Plug
305	2MCN3165-A304	Dusty Cover
401	2MSN2210-A401	Nose Piece
402	2MCN3390-A401	O-Ring
403	2MCN3390-A404	Bolt Assy
404	2MSN2210-A404	Safety Guide
405	2MSN2210-A405	Safety Spring
406	2MSN2210-A406	Safety B Unit
407	2MCN3165-A452	Flat Washer
408	2MSN2210-A408	Hex. Soc. Hd. Bolt
409	2MSN2210-A409	Safety A Unit
410	2MSN2210-A410	Protective Casing
411	2MSN2210-A411	Fixed Ring
412	2MSN2210-A412	Spring Pin
413	2MSN2210-A413	Positioning Sheet
414	2MCN2970-A440	Flat Washer
415	2MSN2210-A415	Hex. Soc. Hd. Bolt
416	2MSN2210-A416	Hex. Soc. Hd. Bolt
417	2MSN2210-A417	Steel Channel
418	2MSN2210-A418	Lock Nut
419	2MSN2210-A419	Magazine A
420	2MCN3390-A120	Half Round Hd. Hex. Bolt
421	2MSN2210-A421	Hex. Soc. Hd. Bolt
422	2MSN2210-A422	Latch Pin
423	2MCN3165-A450	Shaft Ring
424	2MSN2210-A424	Magazine Spacer
425	2MSN2210-A425	Latch
426	2MSN2210-A426	Latch Spring Bushing
427	2MSN2210-A427	Latch Spring
428	2MSN2210-A428	Spring
429	2MSN2210-A429	Rolling Element
430	2MSN2210-A430	Roll Pin
431	2MSN2210-A431	Hex. Soc. Hd. Bolt
432	2MSN2210-A432	Pusher Bearing
433	2MSN2210-A433	Pin
434	2MSN2210-A434	Pusher
435	2MSN2210-A435	Spring Pin
436	2MCN2970-A215	Spring Pin
437	2MSN2210-A437	Lock Nut
438	2MSN2210-A438	Bracket
439	2MSN2210-A439	Lock Nut
440	2MCN3165-A454	Lock Nut
441	2MCN3165-A451	Hex. Soc. Hd. Bolt
442	2MCN2970-A219	Spring Pin
500	2MSN2213-K216	Sequential actuation KIT



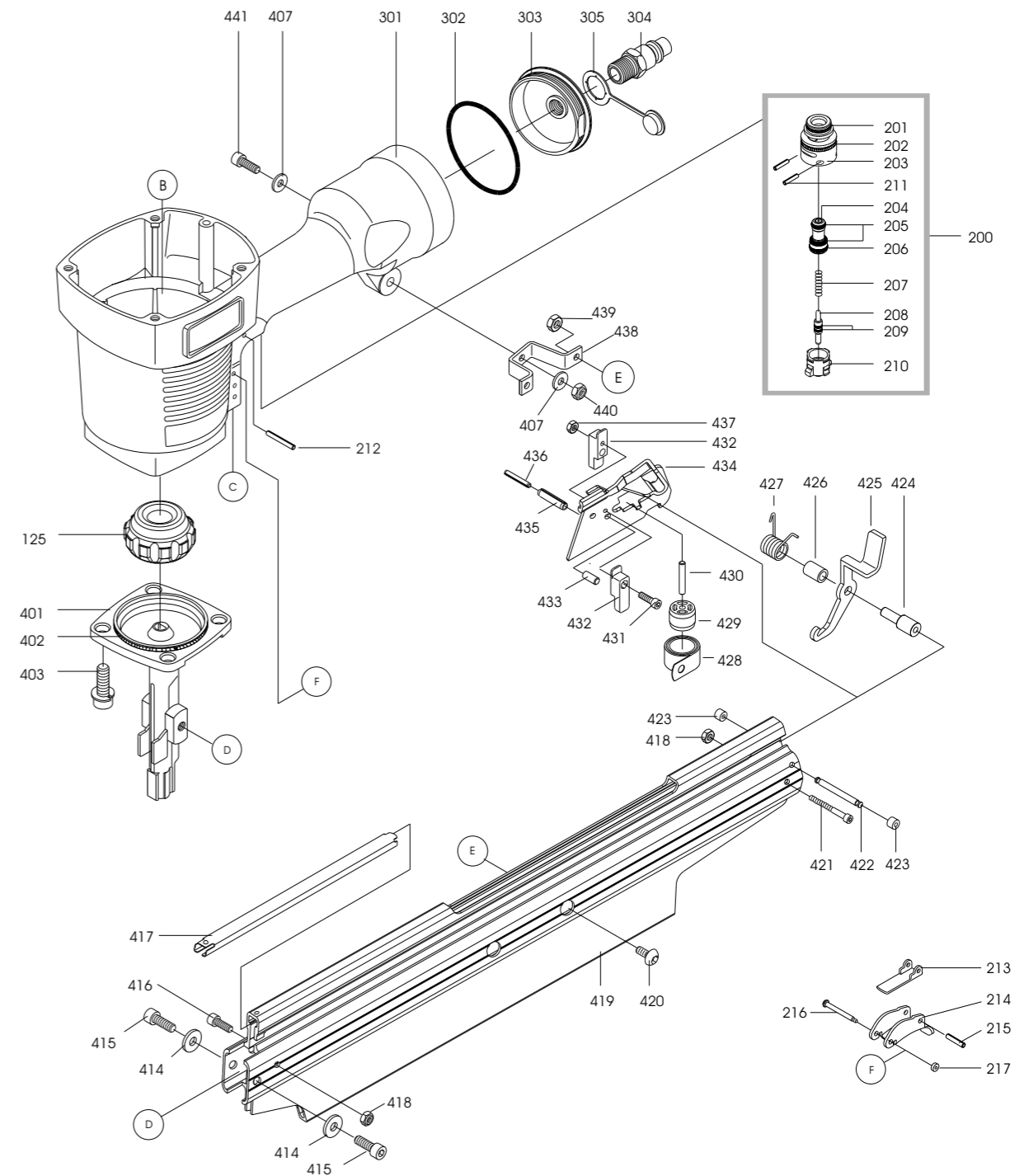
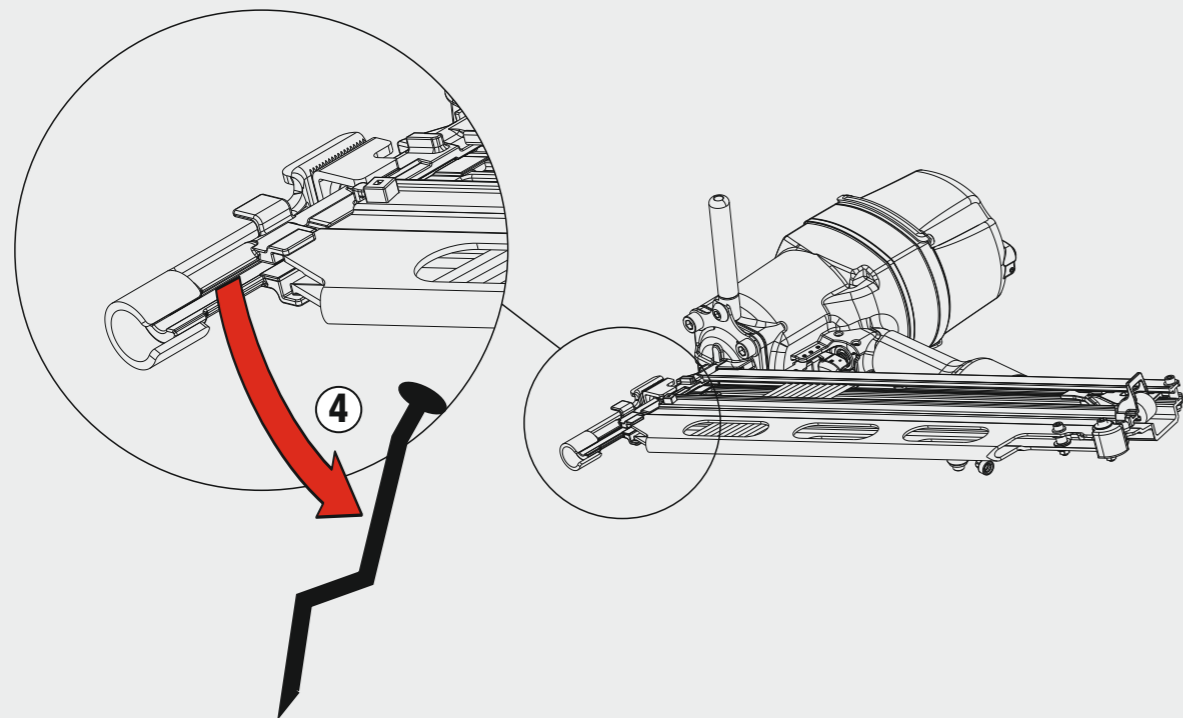
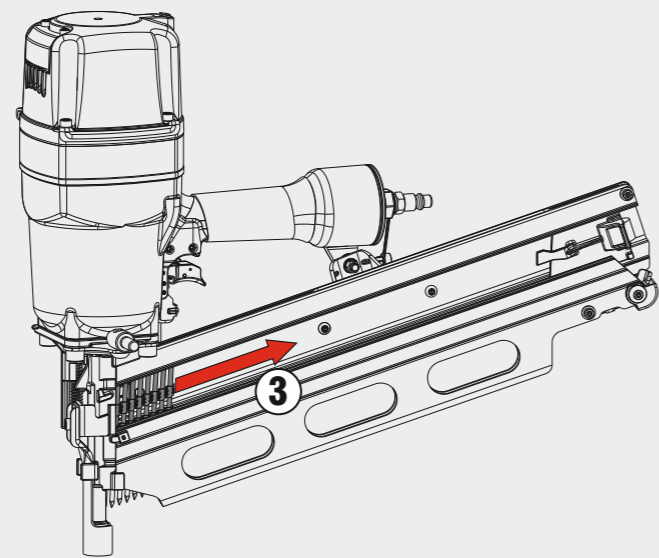
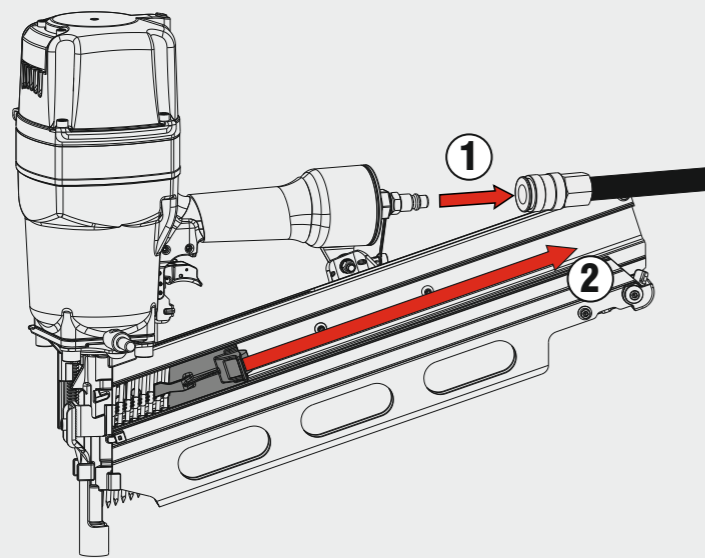
## Regolazione di profondità - Depth adjustment



### Note - Notes

Parti di ricambio - Spare parts - Ersatzteile - Pièces de rechange - Piezas de repuesto  
Ανταλλακτικά - Partes sobresselentes - Wisselstukken - Reservededele

# Disinceppamento - Jam clearing



500

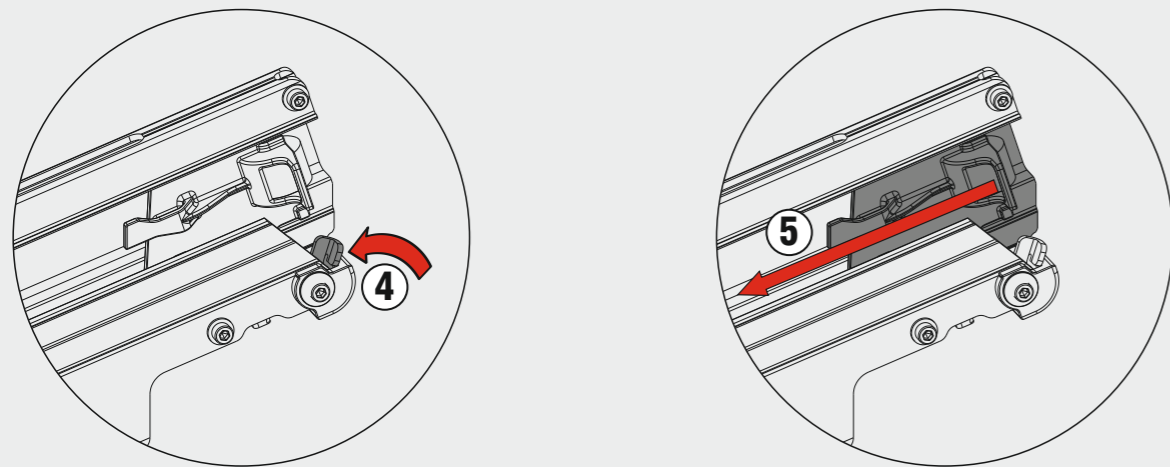
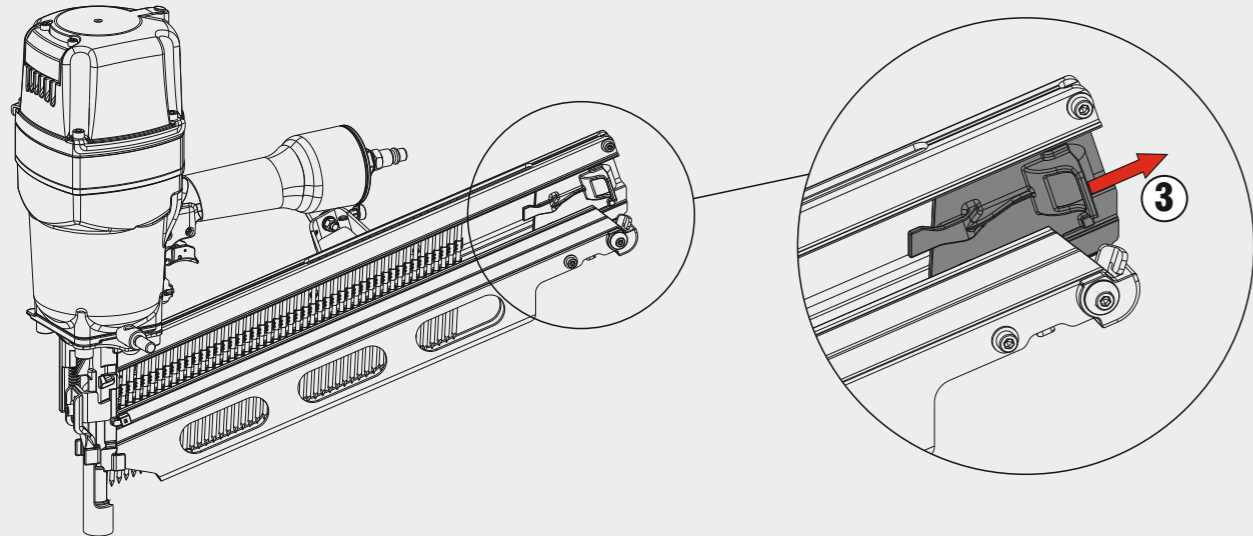
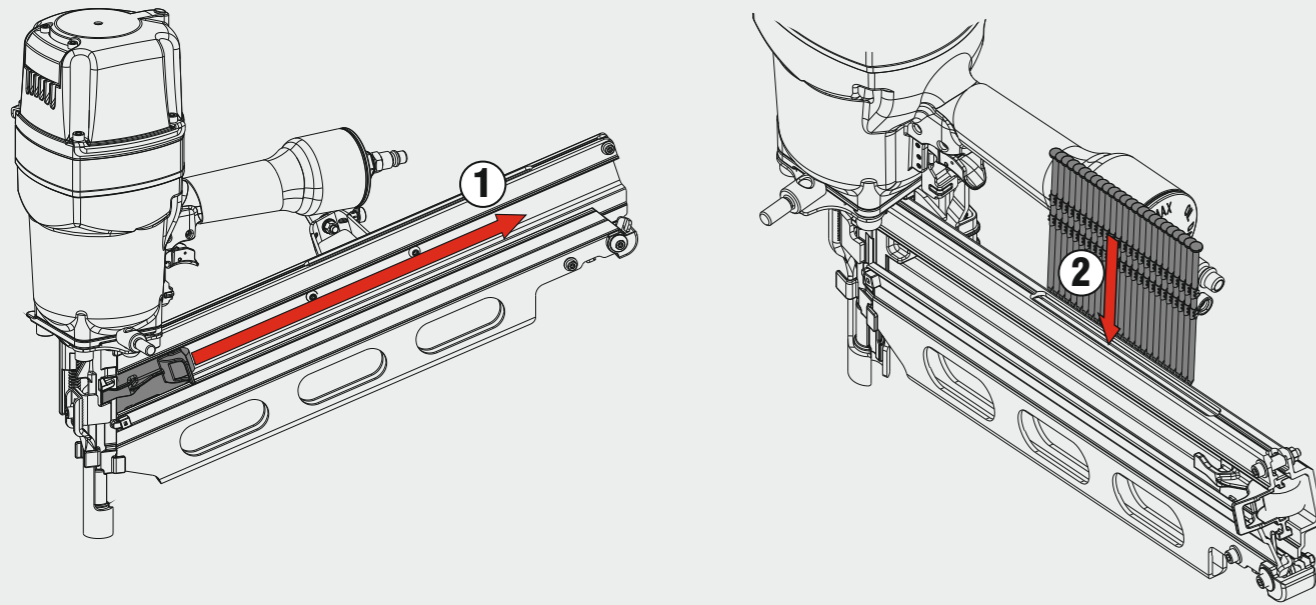
SN22.100

cod. 195MSN22100

Indice di modifica  
Upgrade number

A2

## Caricamento - Loading



## Azionamento - Actuation

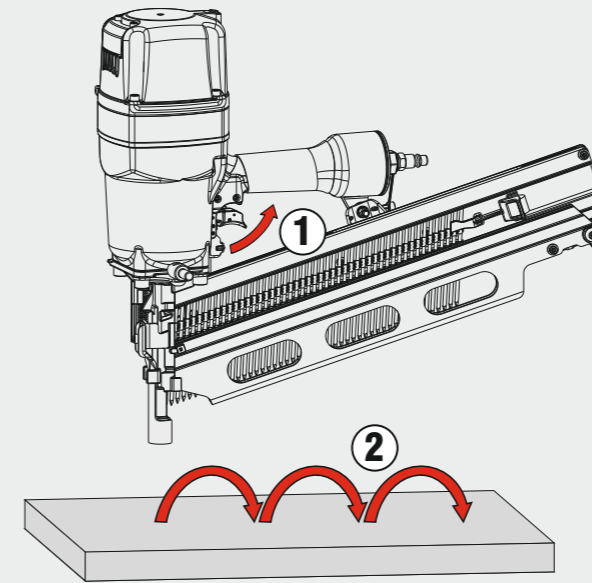


Di serie / Standard

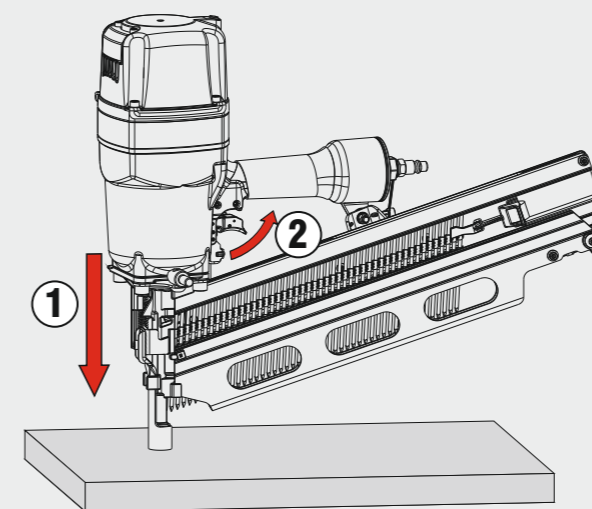


A richiesta / On request

### Azionamento a contatto Contact actuation



Oppure - Or



### Azionamento sequenziale singolo Single sequential actuation

